

# Mapperley

## Area Committee Executive Summary

September 2012

# Introduction

- **The 2011 census results have not yet been released, so in some cases the data comes from the 2001 census. Where it is possible, more recent data or estimates have been used.**
- Mapperley Ward is diverse in its make up with 82% white, 3.4% other white, 3.2% black Caribbean and 2.4% Indian
- Parts of Mapperley Ward, namely Brewster's Road, Pearmain Road Estate, Wells Road and Ransom Road, Caunton Avenue, and surrounding areas rank in the worst 10% nationally in multiple deprivation for health and disability, employment and skills, income and for crime and disorder
- 18% of the working age population claim working tax credit and 36% of pensioners claim pension credit as income top ups
- There were 1,333 enrolments in the Mapperley Ward schools in 2010
- There are two NCC Community Centres in the Ward, Wells Road and Mapperley. There are four centres run by churches: Methodist Church community Centre, St Judes community centre, St Augustine's community centre and St Andrews church Hall and Elohim Development Academy

# Ward priorities – Progress update

Theme	Priority	Key Actions
<b>SAFER</b>	<p>Prevent and reduce substance misuse</p> <p>Raise awareness in preventing and responding to domestic violence</p>	<p>EPIC, CRS, FCT youth provision</p> <p>Vanguard Plus active in the area</p> <p>Enforcement by Police and housing providers</p> <p>DV awareness campaigns e.g. 'Man Enough'</p> <p>Themed networking events and local forums</p> <p>DV awareness funded by councillors in local schools "GREAT"</p> <p>NDVF programme</p>
<b>NEIGHBOURHOODS</b>	<p>Safer Parks meeting the needs of local people</p> <p>Distraction activities for youths involved in negative gang culture</p> <p>Improved housing opportunities</p>	<p>Local volunteers days held in Sycamore and Coppice Parks. Park Ranger patrols</p> <p>Regular distraction activities for young people held weekly</p> <p>Monthly Councillor Ward Walks</p> <p>CPS &amp; housing providers work together to identify premises where bins are left on street and enforce untidy gardens</p> <p>Local volunteer days held on monthly basis in Sycamore and coppice Park's. CPO/PCSO patrols.</p> <p>Support voluntary sector universal youth club at St Jude's community centre.</p> <p>Environmental target hardening of public spaces, cut throughs etc through environmental capital fund e.g. gating Botany/Ransom Road alleyway. Partnership work with police to secure private access against misuse e.g. Melville court.</p>

# Ward priorities – Progress update

<b>FAMILIES</b>	<p>Accessible up to date information for residents</p> <p>Support sustainable youth provision</p> <p>Bus services to responds to community need</p>	<p>Activities timetable produced by FIS</p> <p>Notice boards/email contacts kept up to date</p> <p>FCT, EPIC, CRS providing weekly youth provision</p> <p>Dialogue with NCT. Survey to be carried out</p> <p>Regular quarterly Ward forums on the Wells Road and Wood borough Road areas.</p> <p>Themed Networking forum on young people</p>
<b>HEALTH</b>	<p>Increased access to NHS dental services</p> <p>Promote DOBH to encourage healthier lifestyles</p>	<p>Weekly NHS mobile dentist surgery at Elohim</p> <p>DOBH Team at all local events and Change Makers volunteer recruitment</p> <p>Themed networking event on Health and well being</p>
<b>WORKING</b>	<p>Local services to support residents in finding work, training or learning</p> <p>Support people aged 16-25yrs into employment or training</p> <p>Job Shop Localy</p>	<p>Renewal Trust deliver job shop, enterprise coaching service, business centre, childcare voucher scheme</p> <p>Raise awareness of existing provision and opportunities</p> <p>South Notts College taster day Old Morley School , Wells Road</p> <p>Themed forum on Employment and training</p>

# Community Engagement

## Events Delivered

Event	Lead Partners	Date/Time	Venue
Ward Forum	Police, NCH,	12 June 2012, 7-9	St Andrews Church
Ward Forum	Police, NCT	10 July 2012, 7-9	Elohim Development Academy
Game On	EPIC	03 August 2012, 1-6	Coppice Park
Firework display	Friends of coppice park	4 <sup>th</sup> November	Coppice Park
Park Volunteer session Sycamore Park 27 <sup>th</sup>	Local councillors and volunteers	27 <sup>th</sup> October	Sycamore Park

## Future Events and Activities Planned

Event	Lead Partners	Date/Time	Venue
Ward Forum (North)	Councillors, Locality Management	Tbc	tbc
Ward Forum (South)	Councillors, Locality Management	7pm-9pm 29 <sup>th</sup> November	Elohim Development Academy The Wells Road
Day of Action	Locality Management, Police, CPS, NCH, Metropolitan, TRA	Tbc	Tbc
South Notts Taster Day for young people	South Notts College	9 <sup>th</sup> November	Elohim Development Academy /old Morley School
Park Volunteer Days coppice park	Councillors Parks and Volunteers	24 <sup>th</sup> November 2012 23 <sup>rd</sup> February 2013	Coppice park
Park Volunteer day Sycamore park	Councillors Parks and Volunteers	26 <sup>th</sup> January 2013 30 <sup>th</sup> march 2013	Sycamore Park

# Community Engagement

## Ward Walks

Area/Estate	Date/Time	Meeting Point
Tbc	Tbc	Tbc
See local publicity for details of walks and how to get in touch with councillors and officers		

## Community Meetings

Group	Date	Venue
STANRA	16 <sup>th</sup> August, 6.30pm	Elohim Development Academy
Ward Forum	2 <sup>nd</sup> October	St Andrews Church
Stanra Christmas Party	8 <sup>th</sup> December 2pm-5pm	Elohim Development Academy
Festive activities at St Anns Allotments and Eco works	See Local Publicity	Allotments /Eco works

# Finance

## **Ward Councillor Budget**

- Total amount allocated this period £0.00 (requests being processed)
- Budget remaining unallocated £17,970 (inc of 2012-2013 allocation)

## **Area Capital Fund**

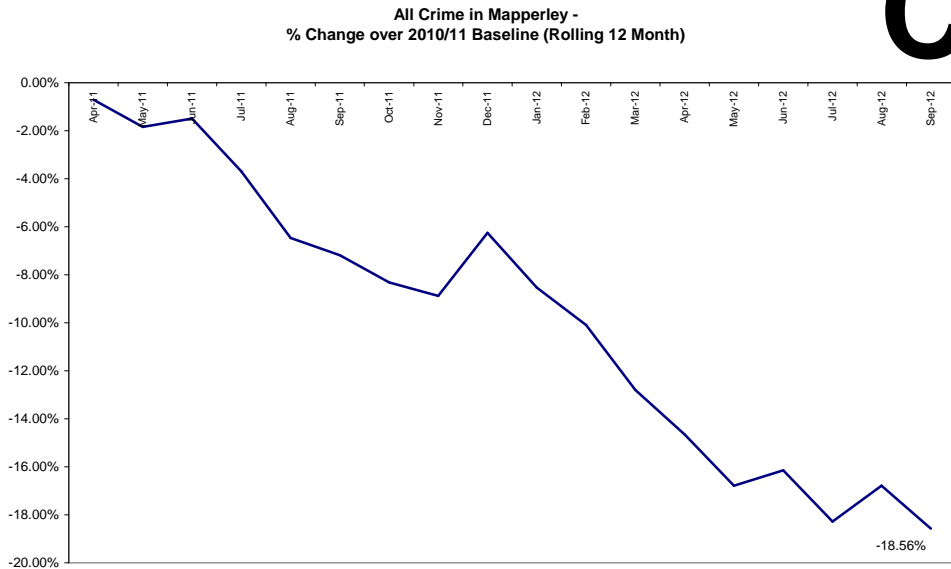
- Total amount allocated this period £6,275
- Budget remaining unallocated £31,990 (inc of 2012-2013 allocation)

## **Other – Section 106, NCH Environmentals,**

## **Other Funding**

- None this period

# Crime



Red		
Amber		
Green*	25 less crimes	-22.94%

\*Refers to September 2012 compared to September 2011

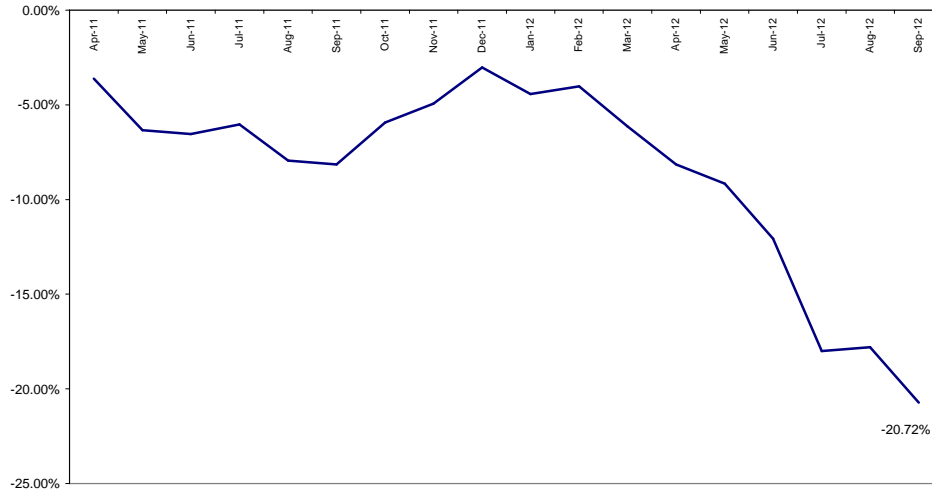
- All Crime in Mapperley is showing a decrease compared to September 2011.
- All Crime is down Year to Date compared to the previous year.
- The above graph indicates that All Crime in Mapperley has **decreased by -19%** against a 2010/11 Baseline. The steady decline in All Crime has also been highlighted.
- Increases have been observed by month in **'Autocrime' (6 crimes)**, **'Burglary' (4 crimes)** and **'Personal Robbery' (1 crime)**. For 'Autocrime' and 'Personal Robbery' these increases are also observed Year to Date.

**Ward Contact: Mark Stanley**



# All ASB

All ASB in Mapperley -  
% Change over 2010/11 Baseline (Rolling 12 Month)



Red		
Amber		
Green*	29 less calls	-34.12%

\*Refers to September 2012 compared to September 2011

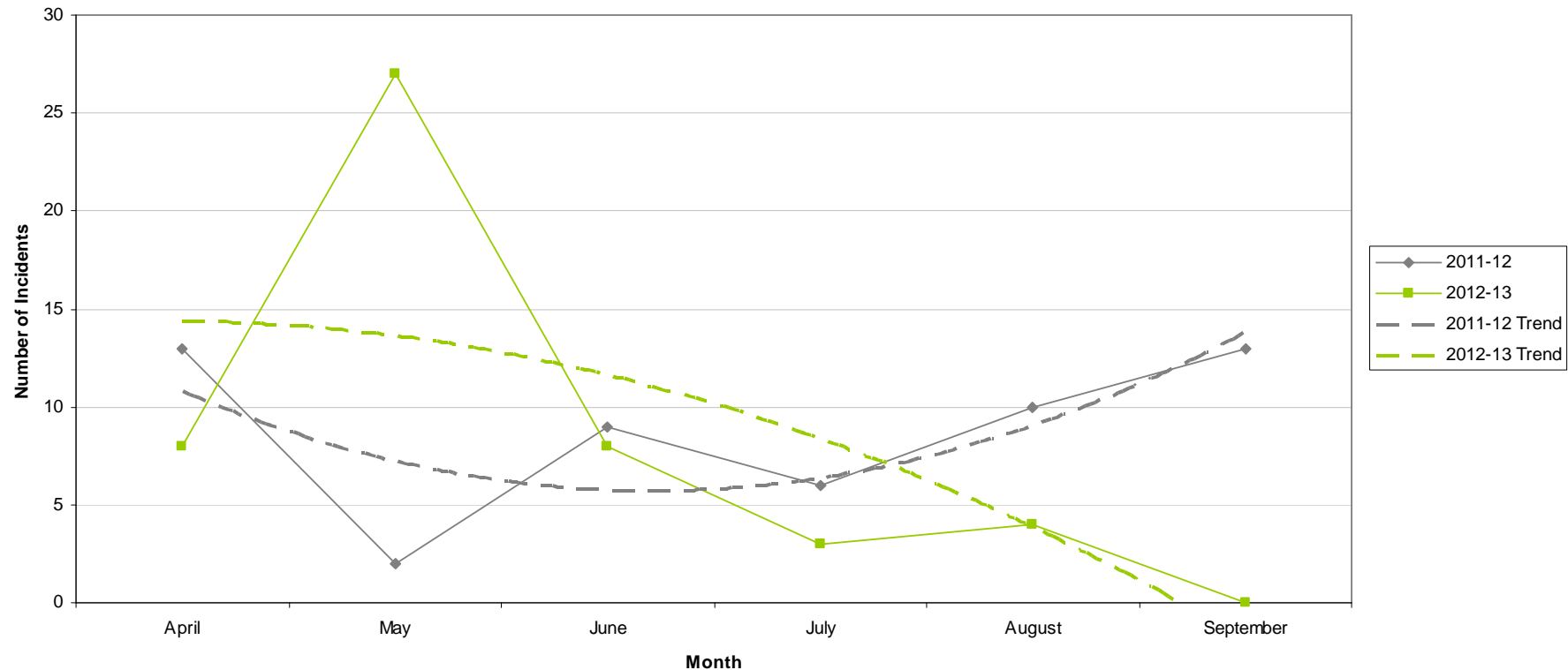
- For September 2012 compared to September 2011 Mapperley is showing a **sizeable reduction (-34%)** in ASB calls.
- By Year to Date, Mapperley has also experienced a **significant reduction** in all ASB calls (-29%).
- The graph above shows that Mapperley is showing a **reduction of -21%** over a 2010/11 Baseline.
- The majority of ASB calls (77%) fell into the **'Nuisance'** category. Of the remaining calls 12% were categorized as 'Personal' and 11% were 'Environmental'.

# Graffiti Reports

<b>RED</b>		
<b>AMBER</b>		
<b>GREEN</b>	<b>13 fewer reports</b>	<b>-100%</b>

- All data refers to a comparison with the previous year's month
- It is proposed that performance over time graphs be used for each indicator
- Historic data for comparison is not available for dog fouling

Incidents of Graffiti

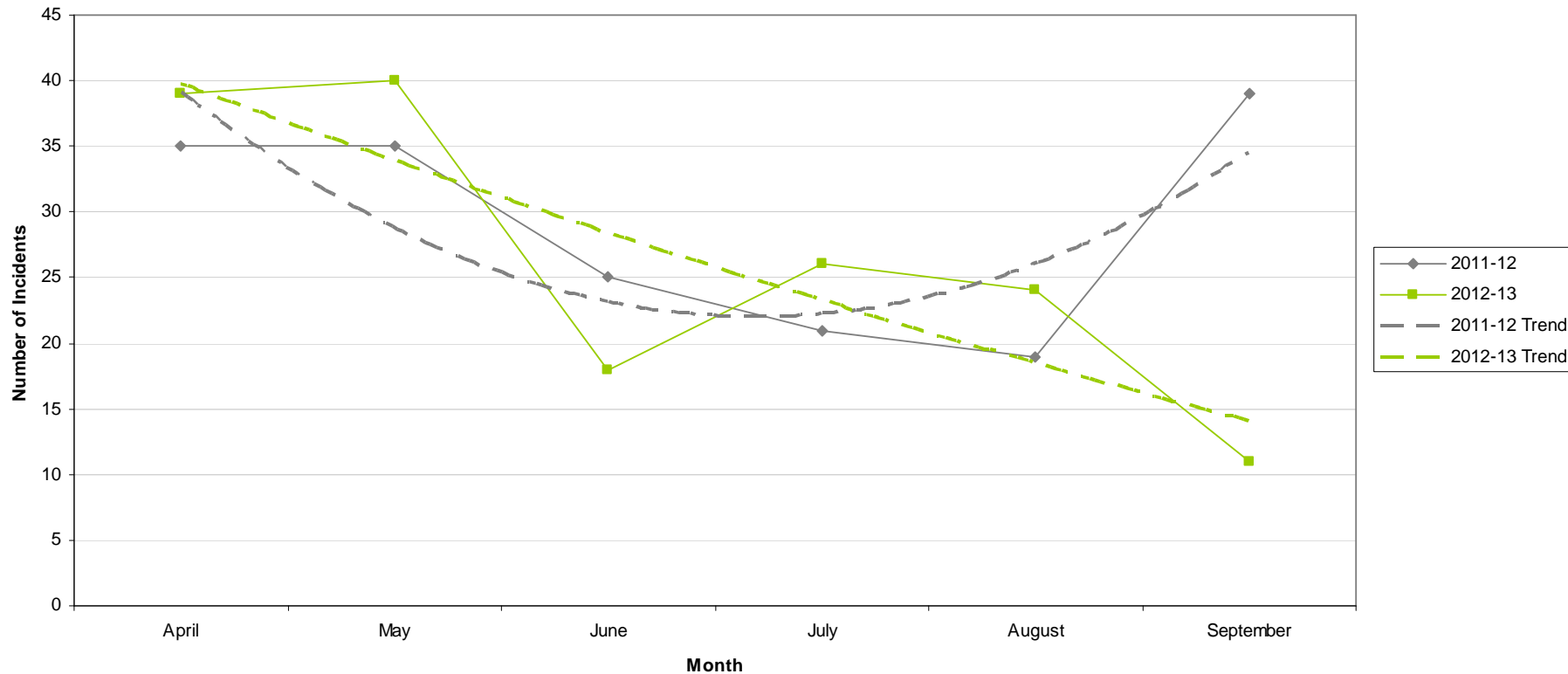


# Fly Tipping

<b>RED</b>		
<b>AMBER</b>		
<b>GREEN</b>	<b>28 fewer reports</b>	<b>-72%</b>

- All data refers to a comparison with the previous year's month
- It is proposed that performance over time graphs be used for each indicator
- Historic data for comparison is not available for dog fouling

Incidents of Fly Tipping

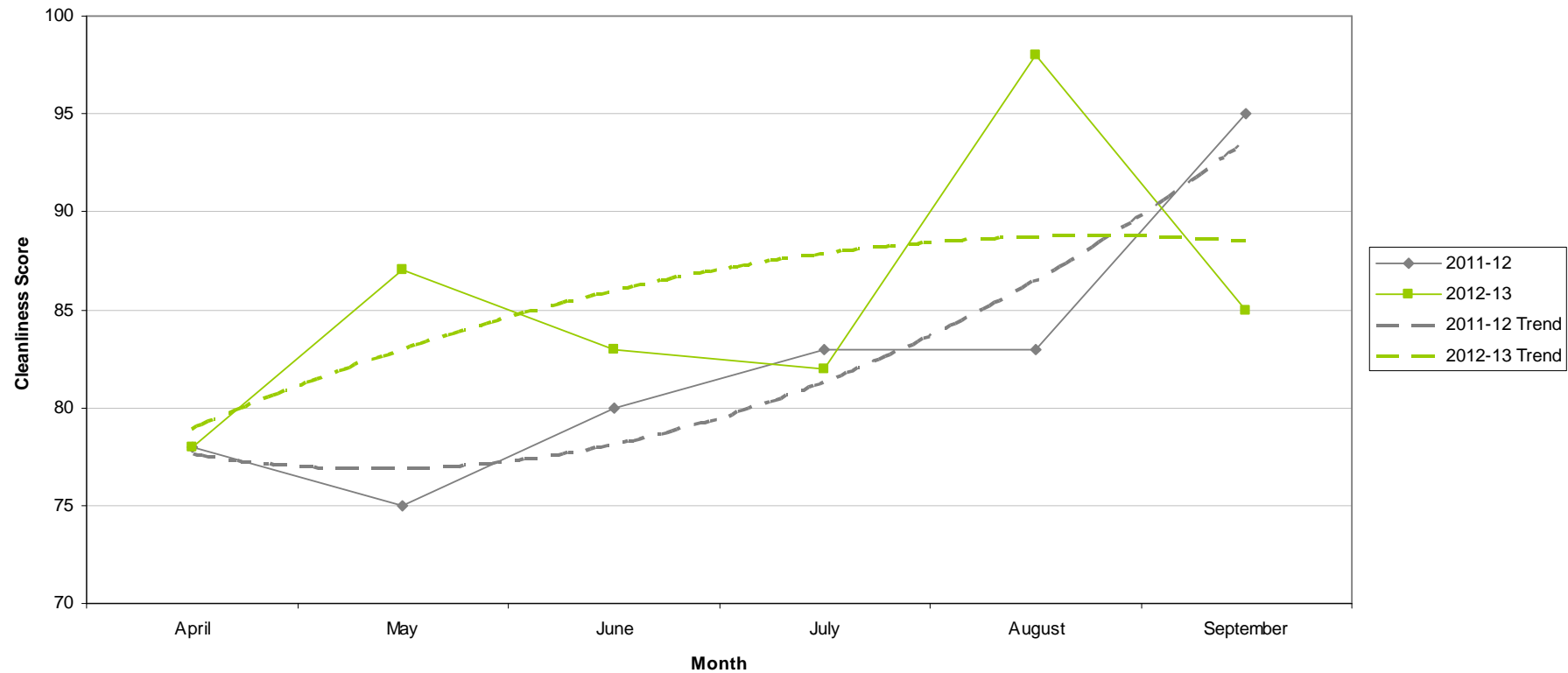


# Cleanliness Index

<b>RED</b>	<b>85</b>	<b>10 point decrease</b>
<b>AMBER</b>		
<b>GREEN</b>		

- All data refers to a comparison with the previous year's month
- It is proposed that performance over time graphs be used for each indicator
- Historic data for comparison is not available for dog fouling

Cleanliness Index



# Unemployment Rate

Ward	Aug-12			Change in last month		Change in last year	
	Number	Rate	City Rank	Number	%	Number	%
Arboretum	830	7	9	12	1.5	86	11.6
Aspley	1,197	10.6	1	15	1.3	57	5
Basford	730	6.6	11	21	3	25	3.5
Berridge	1,090	7.5	6	17	1.6	115	11.8
Bestwood	989	8.7	4	-26	-2.6	-19	-1.9
Bilborough	762	7.3	7	-36	-4.5	6	0.8
Bridge	756	7.2	8	6	0.8	15	2
Bulwell	1,045	9.6	2	-4	-0.4	32	3.2
Bulwell Forest	444	4.9	15	-12	-2.6	-5	-1.1
Clifton North	381	4.3	16	-14	-3.5	27	7.6
Clifton South	506	5.8	12	12	2.4	-11	-2.1
Dales	883	7.6	5	-10	-1.1	8	0.9
Dunkirk and Lenton	262	2.4	19	-5	-1.9	-27	-9.3
Leen Valley	351	5	14	13	3.8	26	8
<b>Mapperley</b>	<b>750</b>	<b>6.7</b>	<b>10</b>	<b>31</b>	<b>4.3</b>	<b>8</b>	<b>1.1</b>
Radford and Park	776	4.1	17	-19	-2.4	36	4.9
Sherwood	552	5.1	13	-19	-3.3	-71	-11.4
St Ann's	1,242	9	3	13	1.1	29	2.4
Wollaton East and Lenton Abbey	144	1.5	20	9	6.7	4	2.9
Wollaton West	262	2.8	18	29	12.4	25	10.5

Source: ONS claimant count August 2012 (from Nomis)

*This is an edited version of a report produced by: Geoff Oxendale, Information and Research Officer, Nottingham City Council*

# Housing



## Mapperley Ward

### Empty properties - Mapperley Ward

Indicator	Current Target	2010/11	2011/12	2012/13		
		Value	Value	Value	Status	Trend
Average void re-let time for Mapperley Ward	26	26.53	24	22		
Lettable voids Mapperley Ward		2	3	6		
Empty properties awaiting decommission in Mapperley Ward		125	2	2		

### Estate star ratings (from Tenant Service Inspectors)

Indicator	2010/11		2011/12		2012/13		
	Value	Status	Value	Status	Value	Status	Trend
Estate star rating - Mapperley	3 Star		3 Star		3 Star		

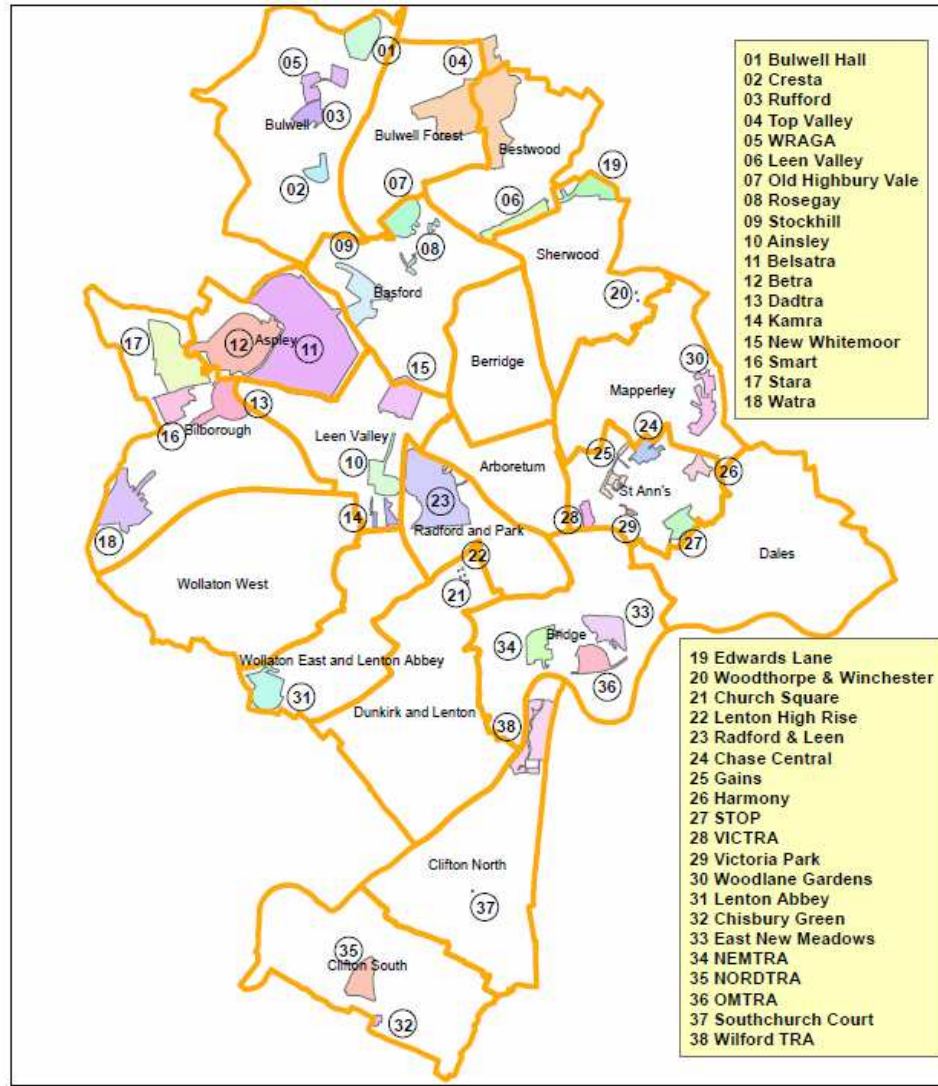
### Rent Collection - Southglade

Indicator	Current Target	2010/11	2011/12	2012/13		
		Value	Value	Value	Status	Trend
Rent charged that has been collected - Southglade office area	100%	100.7%	101.9%	100.4%		

Data prepared by Nottingham City Homes Performance Team

For more information please contact Tricia Quinn, Performance Review Manager on 0115 9157365 or Marcus Parton, Performance Review Officer 0115 915715

# Housing



Map of Tenant and Resident Associations by Ward

# Community Protection

In Mapperley in the last month there was the following court outcome:

- 1 Statutory Notice – for Environment

*Data has been received from Community Protection and where postcodes have been listed these have been geo-coded and mapped to determine the Ward. All addresses relate to the address of the Perpetrator.*

*FPNs are not currently available at Ward level.*



# Methodology

Crime Data and ASB calls have been extracted from the Police systems and mapped to ascertain which Ward they occurred in.

Due to the dates of the meetings, data for all Wards was extracted at the same time at the start of the month - and as such is not officially 'validated' data.

Where possible the most recent data is used, although for some areas this may be a month further in arrears.

Discussions continue with other agencies regarding what further data can be included.